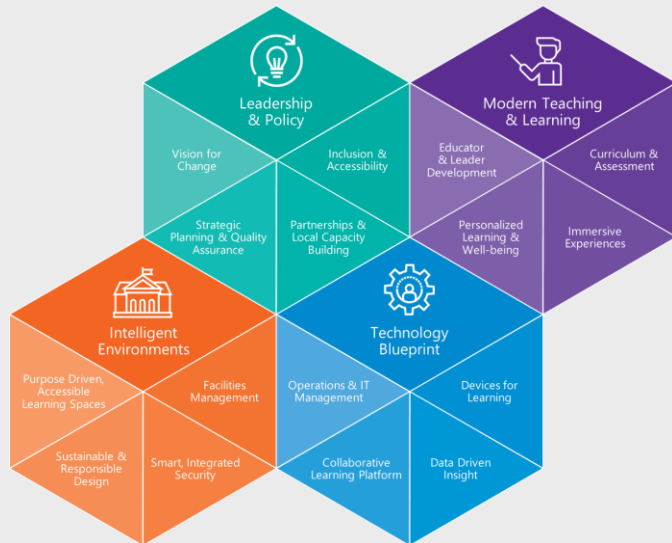


# Microsoft Showcase Schools - Criteria

## *Reaching Sustainable Transformation*



- 1 Commitment To Transform**  
School's leadership vision and commitment to embark on multi-year journey guided by ETF
- 2 Culture of Learning & Growth**  
60% of educators & leaders have a MEC profile, At least 25% of educators are MIEs & Certified MCE and 3% of educators are MIE Experts
- 3 Personalized Learning & Inclusion**  
Meeting every students needs and focus on realizing everyone's potential
- 4 Future-Ready Skills**  
Actively working on developing students' future ready skills
- 5 Data Drives Decisions**  
Insights provide guidance for education improvements and visibility into progress
- 6 Microsoft Solutions Impact**  
Learning impact can be correlated to usage of MSFT Solutions
  - Teams Usage – 60% (total #students, staff, and teachers), 90% of students & teachers use Office 365 exclusively and 60% of all devices are Windows 10